

The NEWS LINE

RUTHERFORD ELECTRIC MEMBERSHIP CORPORATION

www.remc.com

Your Touchstone Energy Cooperative



Vol. 26, No. 10

Owned By Those We Serve

October 2023

REMC's In-Person

Annual Meeting

Saturday, October 28th
West Lincoln High School
172 Shoal Rd, Lincolnton, NC

Registration cards were mailed separately this year. You should receive your registration card soon, so keep an eye out & make sure you bring it to the event!

9:30 am - 11:00 am **Registration & Entertainment**

Live music by Darin & Brooke Aldridge
Door prizes for registered members
Bring the kids!
Treat bags, photo booth, & games

11:00 am **Business Meeting**

followed by
PRIZE DRAWING
Cash, bill credits, & more!
Kids Prize Drawing
Refreshments

REMC's Mail-In

Director Election

Don't forget about the
Director Election!

Submit your ballot by mail or at any REMC office
BEFORE OCTOBER 25th @ 5PM

to be entered into a CASH PRIZE drawing.
Your ballot is in the middle of this magazine.

This drawing will be held the week after the in-person annual meeting. Flip to the middle of this issue of Carolina Country for more info about how to cast your vote.

SWAP SHOP

Rutherford Electric Membership Corporation provides Swap Shop ads as a free service to its members. Guidelines are as follows: Ads are published first-come, first-served. When the space allotted for ads each month is full, remaining ads will be held over for the next issue. Ads will not be run more than once unless re-submitted. Commercial ads will not be accepted. We reserve the right to edit, condense or deny publication of any advertisement. Rutherford Electric Membership Corp. assumes no responsibility for the content of any advertisement and does not endorse or warrant any of the goods so advertised. Please include your account number with your ad.

Mail your ads to:

Newsletter Editor, Rutherford EMC, PO Box 1569,
Forest City, NC, 28043-1569 or e-mail at cbailey@remc.com.
No phone calls, please.

FOR SALE

1989 Ford F-150 long bed, for parts, \$1200 OBO. 828-324-2808.

2004 Toyota Highlander. 4-cylinder motor. New tires and battery. Motor needs some work. Body in good condition. Just over 200,000 miles. \$3,000 OBO. 828-287-2055.

2006 Honda Shadow motorcycle; Burnt orange/black color. Garage kept. Low mileage. Great cruising bike, no wrecks. \$3,500. Serious inquiries only. 704-538-8972.

2007 Mercury Marquis. Needs intake gasket. Tires are 1 year old. \$1100, OBO. Waco area. 704-435-2937, leave a message if no answer.

2008 Chevrolet Trailblazer LT. Second owner. Dark blue color. 153k miles. 4.2L 6-cylinder engine. Leather seats w/ covers. Everything works, drivable, but will need a transmission soon. Sold as-is, no warranty. \$4,800 cash only. Pictures upon request. Stanley, NC. Call or text 704-460-6365.

12 old-timey wood shutters, 12" x 54", \$20 each; Toyota ARE cover (OD green), fiberglass. Will fit small Toyota trucks, was being used on 1995 Toyota Tacoma, \$150. Casar NC. No calls after 9pm, please. 704-477-9231.

Registered Rottweiler puppies. Parents on site. 704-530-0858.

Two male goats; both are fixed. Gentle pets. Call Dean, 980-525-1812.

Antique farm equipment – pull behind. Case turning plow, 2 disc, \$300. Stalk cutter, \$300. Waco area. 704-435-2937, leave a message if no answer.

Baby doll parts, all kinds; Oak firewood and furniture blocks. 828-324-2808.

Split rail fence, 3-rail rails; New, never used smoker grill, plus extras; Wheel chair, extra clean. Leave a message. 828-584-6589.

Large oil drum w/ stand. Large oil heater. Sheet Metal. Total gym, with attachments, excellent cond., only used once or twice. New iron wagon. Two 225-60 R/17 Michelin tires, excellent tread. Leave a message, 828-437-8156.

Stihl leaf blower model #GB55, gas-powered. Like new. Comes w/ gas can and one can of pre-mixed fuel, \$85. Cash only. 828-691-1153.

Battery powered wheelchair. Battery is like-new, with charger. Reese hitch-style car carrier, \$500. Call 828-460-5769

Two side-by-side grave plots at Hollywood Cemetery, Gastonia, NC. Corner lot in section E; easily accessible for those w/ disability or wheelchair. Near front entrance, w/ road frontage. \$4,000. Call 704-616-3374, 9am to 9pm, for questions or appt to view.

Four TOYO tires, 255/50 R20, good tread. Call after 4:30pm, 828-738-4075

Alternator for 2013 KIA Optima 2.4 engine, new in box w/ new belt, 110amp. \$160. Call after 4:30pm, 828-738-4075

10" Craftsman table saw w/ stand \$130. Boice Joiner, 6" cast iron, new motor \$130. Call after 4:30pm, 828-738-4075

John Deere 4230, 100 HP w/ disc & bush hog. \$1,400. Call Tim, 704-349-2277.

Metal or plastic barrels, \$10 each; 275-gallon totes, \$60 each; Feed barrels, \$20; Walnut lumber 1x6x8, dried, \$200 OBO; Old sawmill blade, \$100. Hickory, NC. Call Jeff, 828-327-4782.

Capital Edition Jupiter clarinet. Excellent condition, with case. \$65. 864-441-7921

Beautiful queen-size bed spread set: comforter, pillow shams, throw pillows. Excellent cond. \$50; Pair of Vibram steel-toe combat boots, size 8.5W. Excellent cond. \$100, OBO. Can send pictures. Call 828-442-0904, leave message, will return call.

Three black hawk corn shellers, over 100 years old, \$100 each; Three horse-drawn plows, \$50 each; One King-size bed with oak headboard, \$150. Call 828-863-2254.

Restored, vintage 1960s tea-length wedding dress, off the shoulder w/ rose lace at neckline and hem, \$200; Coach ID wallet, \$50; Small wood-top table w/ white metal legs, \$25. Exercise bike and row machine, \$250. Queen air mattress, only used once, \$30. Call Barry, 704-236-0873.

Two leather suitcases that can be converted into dressers, covers included – 21" suitcase, \$75. 25" suitcase, \$150. Or \$200 for both. Call Barry, 704-236-0873.

WANTED

Ruger 10-22 rifle. 828-584-6589.

Old comic books and WW2 military relics. Collector paying cash. 704-616-6567.

Three-point hitch scrape blade. 704-435-2937, leave a message if no answer.

Planter, one or two row. Used. Multiple seed plates if available. 704-236-6114.

Belwood High School yearbooks 1950-1954; Fallston High School yearbooks from 1963. 704-473-6015.

Credentials & Election Committee Appointed by the Board of Directors



In preparation for Rutherford EMC's 2023 Annual Membership Meeting the board of directors has appointed the following members to serve on the Credentials & Election Committee:

Renee Bingham, 141 EA Bingham Road, Kings Mountain 28086
Joseph Fickling, 3066 Sparrow Springs Road, Gastonia 28052
Ethan Lineberger, 2400 Hudson Poultry Road, Iron Station 28080
Todd Machler, 1254 Machler Ridge Road, Morganton 28655
Boyd Phillips, 55 North Phillips Drive, Marion 28752
Wayne Price, 749 Moriah School Road, Casar 28020
Fred Robinson, 2639 Puetts Chapel Road, Bessemer City 28016
Casey Stockton, 550 Stockton Road, Marion 28752
Norris Hill, 2921 Cove Road, Union Mills 28167

The Credentials and Elections Committee will meet at Rutherford EMC's general office in Forest City, N.C., on October 26, 2023, to verify and count election ballots and certify a quorum for the 2023 Annual Membership Meeting.

2022 Capital Credit Assignment

Non-Profit Operation

Each year the cooperative's revenues in excess of its operating expenses are recorded on the books as capital furnished by the members, and is known as "capital credits". Members are notified of the percentage of margins or capital credits assigned for each year. To compute your individual capital credits for the year 2022, you need only to apply the percentage figure shown in the table below to the sum of energy charges, renewable energy charges, and any fuel and outdoor light charges from your 2022 electric service bills, excluding sales tax.

Refunds of Capital Credits to Estates

Discounted refunds of capital credits accumulated from operating margins are being returned to estates of deceased members on a continuing basis as the required documents are presented. If you know of such a deceased member for whom an application for refund has not been submitted to REMC, the proper representative may apply for the refund and submit the required evidence of death at any Rutherford EMC office. It is important that the electric service be changed to the surviving spouse or the person currently receiving service.

General Refund to Members

Capital Credit refunds are planned as Rutherford EMC's financial position permits.

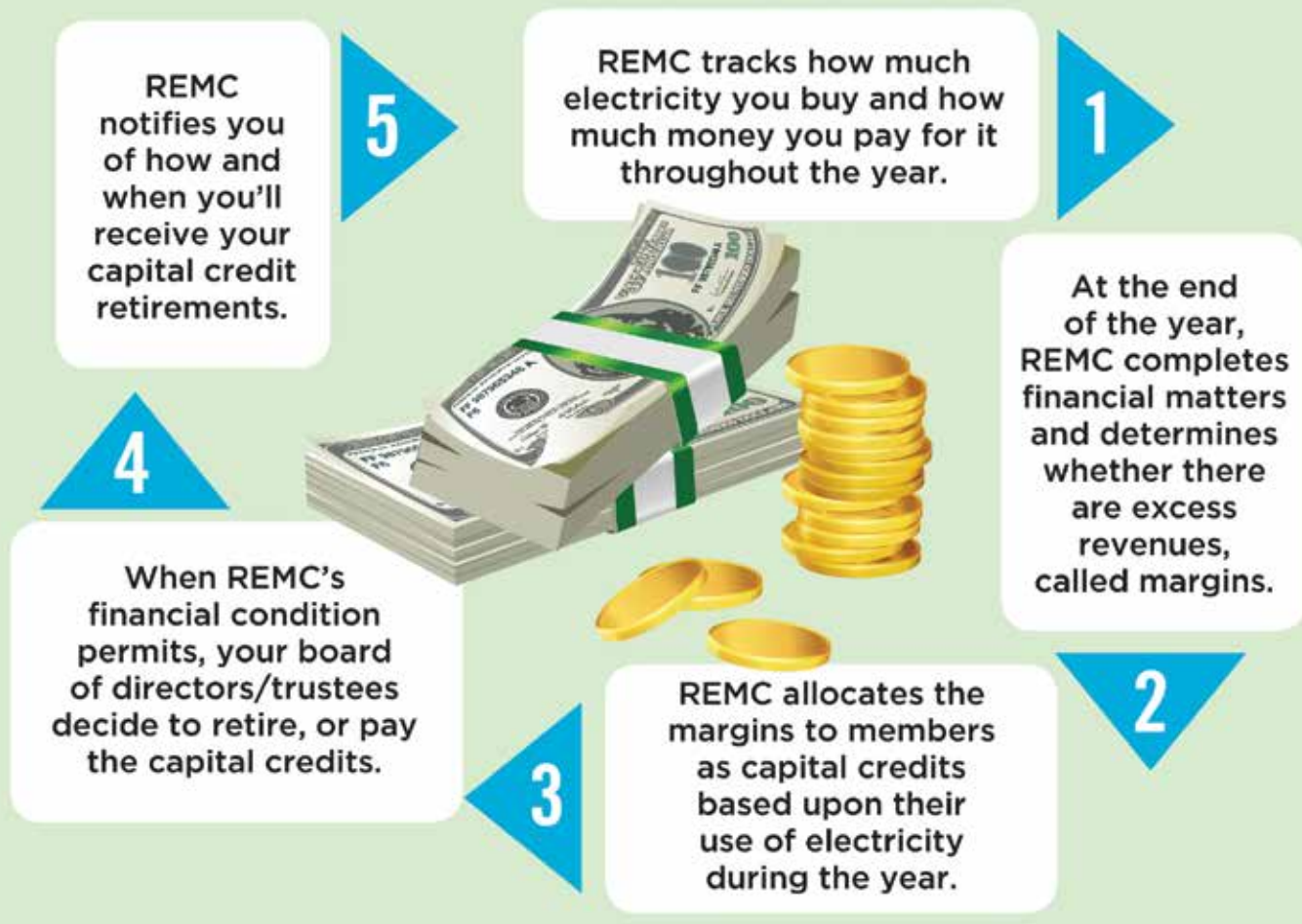
The percentages for margins shown here are applicable to consumers served on Rate Schedules E (Residential), G (General Service), Outdoor and Street Lighting. Industrial and large power consumers served on other schedules can be notified individually of capital assigned.

Capital Credit Assignment Would Be:

If Your Total Electric Bills For 2022 Were:	2022 Operating Margins (Bill x 9.832448%)
\$500.00	\$49.16
\$1,000.00	\$98.32
\$2,000.00	\$196.65
\$3,000.00	\$294.97
\$4,000.00	\$393.30

How Do Capital Credits Work?

Because electric co-ops operate at cost, any excess revenues, called margins are returned to members in the form of capital credits.



Electric Co-ops Grow for the Communities They Serve

October is National
Co-op Month

October is National Co-op Month, and Rutherford EMC is joining cooperatives across the U.S. to celebrate. Co-ops come in all shapes and sizes, but they each have a common goal: to provide goods or services for the members of the co-op.

Electric co-ops, including Rutherford EMC, exist to serve their members. Our priority is to provide affordable, reliable energy to our local communities. Because we are led by you, the members we serve, we can evolve to meet your needs. This October, as we celebrate Co-op Month, we're focusing on the ways "Co-ops Grow" for their members.

Co-ops Grow Communities:

Co-ops help communities grow by promoting economic empowerment, fostering community engagement and supporting the unique needs of co-op members. "Concern for Community" is one of our core principles—and being community-focused is essential to everything we do.

Co-ops Grow Together:

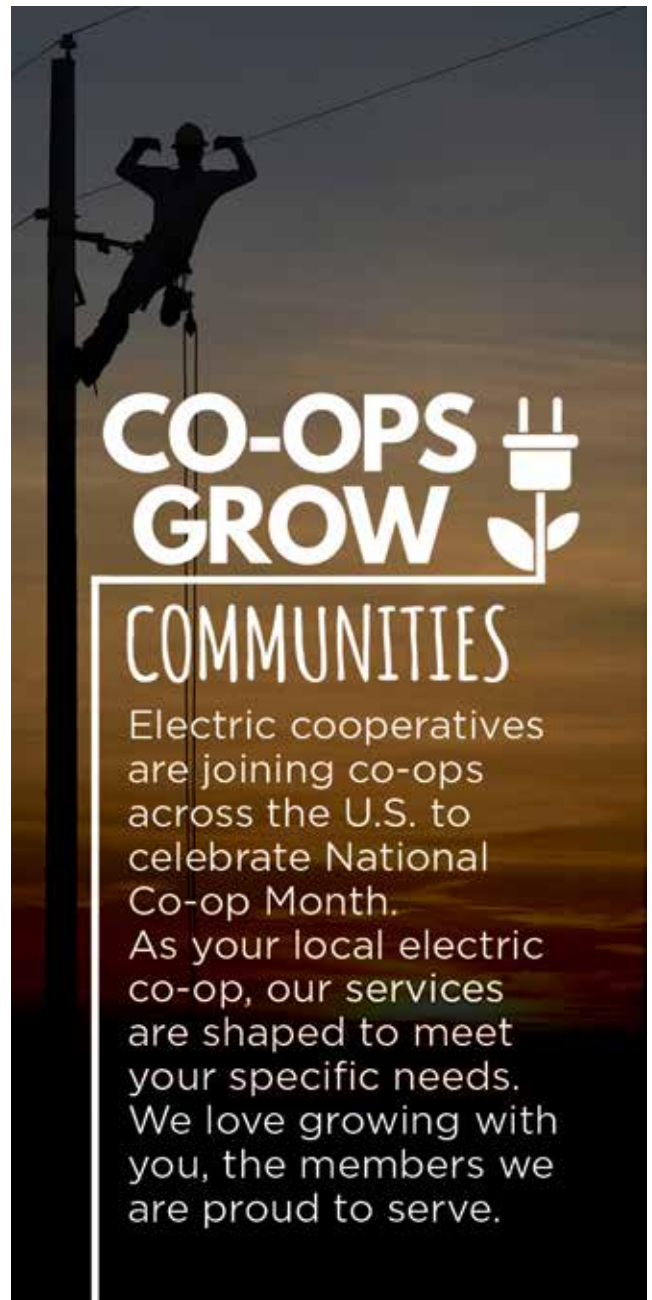
Co-ops are all about cooperation, not competition. That's why electric co-ops work together to share lessons learned, successful strategies and better ways to serve our members. We're better when we grow together!

Co-ops Grow Tomorrow's Leaders:

Electric co-ops serve as fertile ground for growing tomorrow's leaders through a variety of youth engagement programs. Whether through school demonstrations, community events or the Electric Cooperative Youth Tour program, we're committed to providing opportunities for local youth to learn and thrive in our community and beyond.

Co-ops Grow for You:

At Rutherford EMC, your satisfaction is our No. 1 goal. It's why we were formed many years ago to fulfill a uniquely local purpose. We've come a long way since then, and your needs continue to evolve. That's why we'll never stop growing for you!



Energy Efficiency Tip of the Month

Did you know fall is the perfect time to schedule a tune-up for your heating system? Home heating accounts for a large portion of winter energy bills, and no matter what kind of system you have, you can save energy and money by regularly maintaining your equipment.

Combining proper equipment maintenance and upgrades with recommended insulation, air sealing and thermostat settings can save about 30% on your energy bills.

Source: Dept. of Energy