

The NEWS LINE

RUTHERFORD ELECTRIC MEMBERSHIP CORPORATION
www.remcc.com

Vol. 25, No. 9

Owned By Those We Serve

September 2022

RUTHERFORD EMC'S 85TH ANNUAL MEMBERSHIP MEETING TO BE AN ONLINE VIRTUAL EVENT

Rutherford EMC's Annual Membership Meeting will be held online once again for 2022. This decision was made due to the great success and member involvement experienced over the last few years. We are very thankful to have the technology available to bring the co-op's business directly into your home.

The business session can be viewed live on our website at remc.com, Saturday, October 29, 2022, beginning at 11 a.m. For members who are unable to view the meeting live, a recording will be posted on our website from October 29 until November 5, 2022, for you to view at your convenience.

This year's election ballots will be sent through the Carolina Country magazine. You will find your ballot attached to the inside of the October issue, and the issue will mail in a clear plastic bag for added security. A postage paid envelope will be included for you to mail in your ballot, however if you prefer, you may submit your ballot at any of our offices using the provided drop box. Members who are active as of August 24, 2022, will be mailed their October edition of the Carolina Country magazine on or about September 23, 2022. The attached ballot will include specific directions on how to cast your vote by mail using the self-addressed envelope.

Since the 2022 Annual Membership Meeting will be a virtual event, the prize drawings will be handled accordingly. Every member who casts a ballot will be included in the prize

drawing. All ballots must be received by 5 p.m. on October 26, 2022, in order to be counted and added to the prize drawing. This includes both mail-in ballots and those submitted at our office drop boxes. All prizes will be cash money and the GRAND PRIZE is \$1,000! There will also be (2) - \$750 cash prize drawings, (4) - \$250 cash prize drawings, and (15) - \$100 cash prize drawings. You will have 22 chances to win cash and there is a total of \$5,000 in prize money up for grabs, so we encourage everyone to get your ballot in for a chance to win one of these great cash prizes!

Please mark your calendars now and plan to join us on October 29, 2022 at 11 a.m. for Rutherford EMC's 2022 Virtual Annual Meeting. Let's all come together as a cooperative and make this another successful event! If you have any questions regarding the 2022 Annual Meeting, the voting process, or any submissions that you would like discussed during the meeting, please contact Chad Bailey at 1-800-521-0920 Ext. 450 or by email at cbailey@remc.com by Thursday, October 27, 2022.



SWAP SHOP

Rutherford Electric Membership Corporation provides Swap Shop ads as a free service to its members. Guidelines are as follows: Ads are published first-come, first-served. When the space allotted for ads each month is full, remaining ads will be held over for the next issue. Ads will not be run more than once unless re-submitted. Commercial ads will not be accepted. We reserve the right to edit, condense or deny publication of any advertisement. Rutherford Electric Membership Corp. assumes no responsibility for the content of any advertisement and does not endorse or warrant any of the goods so advertised. Please include your account number with your ad.

Mail your ads to:

Newsletter Editor, Rutherford EMC, PO Box 1569,
Forest City, NC, 28043-1569 or e-mail at cbailey@remc.com.
No phone calls, please.

FOR SALE

Two crypts in Westview Gardens on Edgewood Rd, Bessemer City, their located in the smaller mausoleum, B-11 & B-12, \$3,000 ea. 704-276-5752.

Soild oak TV cabinet – measures 60" wide x 71" tall x 16 1/2" deep, stained a natural oak color, very good cond., \$200. 828-403-2884.

Sears Free Spirit 10 speed bike w/20" frame & puncture proof tires, ex. cond., \$75. Text 828-691-1757.

2 wheeled deer cart, \$30. 704-472-9112

1987 Cimarron 15' boat w/Yamaha 50 hp outboard motor & trailer, \$750 obo; wireless back up camera, new in box, \$35, Dallas, NC. 704-678-4334.

2014 Aries lawn tractor parts: 42" mowing deck in good cond., \$100; 17.5 HP Briggs & Stratton engine in good cond., \$150 (one mounting bolt is broken); all other parts are free if you buy deck & motor. 704-460-6365.

Edgestar wine cooler – Model CWR362FD, built-in or free standing, dual cooling zones, 36 bottle capacity, measures 33 7/8" x 23 7/16" x 24 1/2" deep, needs servicing with coolant added, \$175; Homak 8 gun steel security cabinet, plastic barrel rest w/ padded backing, full length piano hinge door, fixed metal shelf for storage, four way locking system w/2 live action lock plates, ex. cond., \$225. Pictures upon request. 828-442-3925.

Pair of 1980 Fisher ST-830 floor speakers w/ 15" woofer, 5" midrange & 3" tweeter, speakers stand 32" tall x 18" wide x 13" deep, \$125; Gold Seal Ice Cream vintage advertising clock, measures 25" wide x 12 1/2" long x 4 1/2" deep, runs quiet & keeps correct time, \$275; wooden soft drink cases – Lotta Cola & Pepsi Cola, \$25 ea.; 3 vintage typewriters w/carrying cases: Webster XL500 w/owner's manual, JC Penny Jayvee and a Tippa/Adler w/owner's manual, all 3 in very good cond., \$85 for all 3. Pictures upon request. 828-448-0338.

Wood flooring – have 90 ft., still in boxes, color is Blue Ridge Gun Stock, pd. \$440, will take \$300 & deliver within 75 miles. 828-659-4600.

NKC Miniature Pinscher puppies, ready at the end of August, have black & tans as well as blues. 828-334-4257.

Complete bariatric bed and trapeze, works great, buyer responsible for disassembly and removal, \$350 obo, Cherryville, NC. 704-435-3548 before 9 pm.

Dog box that measures 36" long x 59" wide x 44" deep, will fit a CJ 7 Jeep, holds 6 dogs, has bench seat on top w/handrail, storage box in rear for supplies, add some heavy wire to seal up box, \$350, pictures upon request. 828-413-1969.

Metal file cabinets, \$25 ea. as is or \$50 and up if painted & restored, pickup or delivery, Gastonia, NC. 704-560-1942.

Yamaha upright piano P22, light oak in color, very good cond., \$2,750. 828-460-6054.

Barcelona Red A.R.E. fitted hard cover for a pickup truck, fits beds approximately 61" long, originally fitted for a 2010 Toyota Tacoma, \$600 neg. 828-803-7930.

Food grade totes \$100 ea.; soap totes, \$75 ea.; feed barrels, \$20 ea.; 15 gallon plastic solid top, \$10 ea., Hickory, NC. 828-327-4782.

Beagle female puppies – tri-color: brown, black & white, full blooded, parents on site, champion bloodline, vaccinated & wormed, \$300 ea., Valdese, NC. Text or call 828-221-6970.

Muscovy baby ducks, 2 weeks old - 3 for \$10; red & black Road Heat 20" bicycle/motorcycle, looks brand new, can text pictures upon request. 704-241-3734.

Motorhome – 40' diesel pusher w/low miles, ex. cond. inside & out w/many extras, \$55,000. 828-446-8501 or 828-446-4570.

Cowboy boots – have 3 pairs: Dan Post size 11.5D, dark brown w/round toe, \$150; Tony Lama size 12D, multi-colored tops w/brown square toes, ex. cond., \$50; Durango low cut w/side zippers, light brown, ex. cond., \$50 or all 3 pair for \$225. 828-433-0645.

Golf clubs – 7.5 degree Titleist driver, Super 420 forged driver, 18 degree utility wood, 3-PW Ping Knock Tour Model irons, right or left handed brass putter, blue fabric Ping bag & towel w/2 dozen good used golf balls. 828-433-0645.

2005 Ford Five Hundred car w/60,000+ miles, 2nd owner, silver in color w/gray interior, 4 door, nearly new Hankook tires, very clean car, no damage or scratches, overall in ex. cond., \$6,700 neg. 828-433-0645.

Toro Wheelhorse, 20 hp, hydrostatic automatic transmission, 48" cut, \$1,000; Wheelhorse 414-8 lawn tractor, 14 hp Kohler engine, manual transmission, 48" cut, 8 speed, \$500. 704-922-8828 or 704-884-1498.

Approximately 300-400 rough cut Poplar slabs, assorted thickness and lengths, \$10 ea.; 15" DC380 Delta, 3 hp industrial planer, \$500; Fisch square hole drill, \$300; Delta oscillating sander, \$50; Craftsman 20" scroll saw, \$100; Husky pneumatic flooring nailer, \$50; router table, \$75. 828-756-7067.

McDowell High year books (Odyssey) 1981, 82, 83, 84, 86, 89, \$40 ea.; 1973, 1974, 1991, \$75 ea. Marion, NC. 828-442-6322.

50th Anniversary Edition (1903-1953) of year book (Rhododendron) Appalachian State Teachers College, \$60; 1954, 55, 56, \$20 ea. Marion, NC. 828-442-6322.

Flagstaff 21' Ultra-Light travel trailer, 90" wide independent suspension, AC, microwave, awning, refrigerator, water heater, complete hitch & brake controller, ex. cond., original owner, \$3,995. Linville Falls area, 828-545-8412.

1992 Chrysler LeBaron – white in color, blue button

tucked interior, garage kept since new, 175,000 miles, 1 owner, local driving, \$6,000 obo. 828-443-8503.

The Etude Music Magazine - (7) 1937, (4) 1938, make offer. 828-442-6322.

2 – 848 New Holland round bailers, 1 is field ready, other for parts, \$1,400 obo; 1746 Heston round bailer, very good cond., \$8,000. 704-530-1632.

John Deere 5 ton wood splitter w/5 hp engine, \$500; 1 ton shop crane (motor puller) w/3 ton ram, \$200; John Deere 160 riding mower, needs work, \$350. 828-327-4782.

2019 Kioti 2400 tractor, 4x4, diesel engine, only 36 hrs., good cond. 828-430-3391.

Camper/trailer weight distribution hitch w/both lift bars, safety chains and sway bar control, \$150. 704-530-8823.

1974 Chevrolet 4x4 truck, good for parts or restoration; 20 sections of homemade steel scaffolding, 4' x 4' x 9' sections, \$30 per section; 14' shingle lift ladder. 704-739-7809 or 704-466-4295.

Shih/poo's – D.O.B 6/17/22, 2 males, first shots & worming's, de-dew clawed & tails docked; upright Gaylord piano, \$475 firm. 828-433-1374.

Peavey Escort 2000 sound system - 1500 watts, 4 channels for mics plus 1 in/out/aux channel, includes (2) mics w/chords, & (2) 15" speakers w/large stands, \$800 for all. 828-437-7257 or 828-443-9197.

MISCELLANEOUS

For Rent: Horse pasture & barn, \$150 a month per horse, you must feed horse and clean up manure daily, located at exit 94 in Nebo, NC, also you and a friend can ride 450 acres with miles of nice wooded trails and 2 miles alongside South Muddy Creek, have room for 3-4 horses. 828-413-1969.

For Free: Karcher T-300 driveway cleaner accessory, fits Karcher Models K2 – K5. 352-408-9693.

WANTED

Hunting land in Gaston, Lincoln, Burke, Cleveland or Caldwell counties for 1 man, no more than 2, depending on size, willing to pay lease & share meat. 704-678-9819.

Someone to paint an outside garage and tin roof. 704-271-4223.

Looking for a Ryobi Model 725R for parts. 704-472-9112.

1964 Ford Custom 4 door car. 828-430-3391.



Nominating Committee Chooses Board Candidates

The duly appointed Committee on Nominations met on July 12, 2022 at the cooperative's general office in Forest City, NC for the purpose of selecting nominees for directors to be elected this year. The Committee on Nominations has selected three nominees to be considered for three year terms on the Board of Directors. These nominees will be voted upon by the membership via mail-in ballot prior to the 2022 Virtual Annual Membership Meeting to be held on Saturday, October 29, 2022.

The nominees selected by the Committee on Nominations are:

Directorate District One

Jill P. Lovell, 301 Saint Luke Church Rd., Kings Mtn., NC

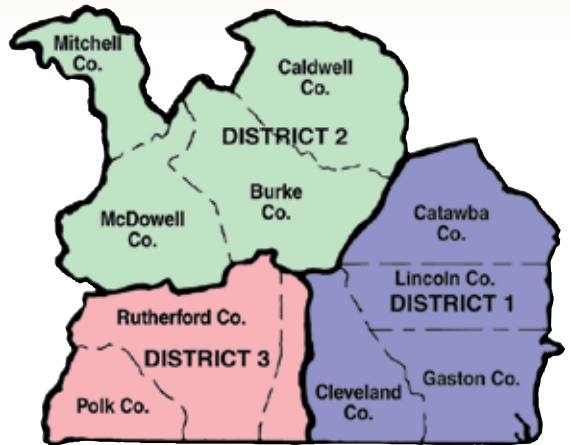
Directorate District Two

Joseph N. Quinn, 14036 US 221 North, Marion, NC

Directorate District Three

Robyn D. Houser, 573 John Queen Rd., Casar, NC

In accordance with the Bylaws, the membership will elect one director from Directorate District One, one director from Directorate District Two, and one director from Directorate District Three. The approximate geographical boundaries of the directorate districts are shown in the drawing.



Attention Educators:

Bright Ideas Final Deadline is September 15

It's the final call for Bright Ideas Education Grant applications! Rutherford EMC is partnering with local educators to bring learning to life through the Bright Ideas education grant program once again. Educators can submit their applications for Bright Ideas grants of up to \$1,000 for innovative, hands-on classroom projects that would not otherwise be funded. Learn more about this awesome program, find helpful grant writing tips and apply online at ncbrightideas.com, but hurry the deadline is September 15, 2022.

"Rutherford EMC is proud to have supported teachers by providing this great opportunity since 1994. We see firsthand how dedicated and creative our local educators are and certainly understand the important role they play in our future generations," said Dirk Bureson, General Manager of Rutherford EMC. "By providing these new tools to help educators reach students, we are investing in young minds and the future of our local communities." Rutherford EMC expects to award over \$15,000 in grants to innovative and deserving educators again this year. These grants are available to qualifying K-12 teachers for projects in any subject including music, art, history, language, reading, science, mathematics, and information technologies, just to name a few. Educators can apply individually or as a team. Applications can only be submitted online and are only being accepted through September 15, 2022, so hurry!

The application process is simple to complete, you can even start the application and save your work until you have a chance to return to it. To apply you must include a budget, and explain the implementation, goals, creative elements and evaluation of the project. Applications will be judged through a competitive evaluation process. Judges will be looking for projects that feature inventive and creative approaches to learning. Grants for the 2022-2023 school year will be awarded in November.

Bright Ideas grants are made available through each of North Carolina's 26 independent electric cooperatives, including Rutherford EMC. Since the

program began in 1994, electric cooperatives have awarded more than \$14.3 million in grants to teachers, funding nearly 13,500 projects benefiting approximately 2.8 million students across the state.

As a member-owned cooperative, Rutherford EMC is committed to supporting local communities. During the 2021-2022 school year Rutherford EMC awarded over \$16,000 in Bright Ideas Education Grants to 20 very deserving local educators. This could be your year, so get your Bright Ideas application started online today!

**Bright Ideas**
EDUCATION GRANTS

Final Deadline Approaching

SEPTEMBER 15TH



Slow Down:

Back to School Means Sharing the Road

School days bring congestion: School buses are picking up their passengers, kids are hurrying to get to school before the bell rings, and harried parents are trying to drop their kids off before work. It's never more important for drivers to slow down and pay attention than when kids are present – especially before and after school.

If You're Dropping Off

Schools often have very specific drop-off procedures for the school year. Make sure you know them for the safety of all kids. The following apply to all school zones:

- Don't double park; it blocks visibility for other children and vehicles
- Don't load or unload children across the street from the school
- Carpool to reduce the number of vehicles at the school

Sharing the Road with Young Pedestrians

According to research by the National Safety Council, most of the children who lose their lives in bus-related incidents are 4 to 7 years old, and they're walking. They are hit by the bus, or by a motorist illegally passing a stopped bus. A few precautions go a long way toward keeping children safe:

- Don't block the crosswalk when stopped at a red light or waiting to make a turn, forcing pedestrians to go around you; this could put them in the path of moving traffic
- In a school zone when flashers are blinking, stop and yield to pedestrians crossing the crosswalk or intersection
- Always stop for a school patrol officer or crossing guard holding up a stop sign
- Take extra care to look out for children in school zones, near playgrounds and parks, and in all residential areas
- Don't honk or rev your engine to scare a pedestrian, even if you have the right of way
- Never pass a vehicle stopped for pedestrians

- Always use extreme caution to avoid striking pedestrians wherever they may be, no matter who has the right of way

Sharing the Road with School Buses

If you're driving behind a bus, allow a greater following distance than if you were driving behind a car. It will give you more time to stop once the yellow lights start flashing. It is illegal in all 50 states to pass a school bus that is stopped to load or unload children.

- Never pass a bus from behind – or from either direction if you're on an undivided road – if it is stopped to load or unload children
- If the yellow or red lights are flashing and the stop arm is extended, traffic must stop
- The area 10 feet around a school bus is the most dangerous for children; stop far enough back to allow them space to safely enter and exit the bus
- Be alert; children often are unpredictable, and they tend to ignore hazards and take risks

By exercising a little extra care and caution, drivers and pedestrians can co-exist safely in school zones.

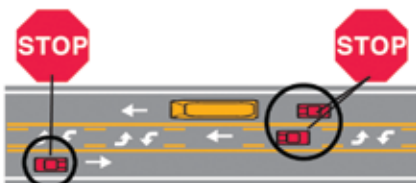
Source: The National Safety Council



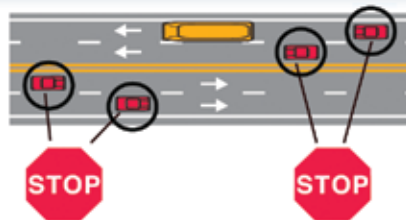
North Carolina's School Bus Stop Law



Two-lane roadway: When school bus stops for passengers, all traffic from both directions must stop.



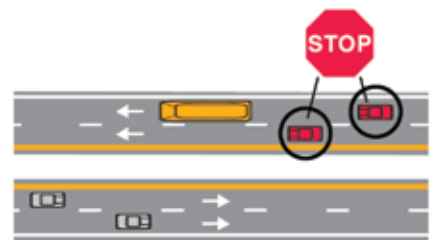
Two-lane roadway with a center turning lane: When school bus stops for passengers, all traffic from both directions must stop.



Four-lane roadway without a median separation: When school bus stops for passengers, all traffic from both directions must stop.



Roadway of four lanes or more with a center turning lane: When school bus stops for passengers, only traffic following the bus must stop.



Any divided highway with a median separation: When school bus stops for passengers, only traffic following the bus must stop.